

NOPSA Quarterly Industry Report

Dec 2009

(data to Q2 2009-10)

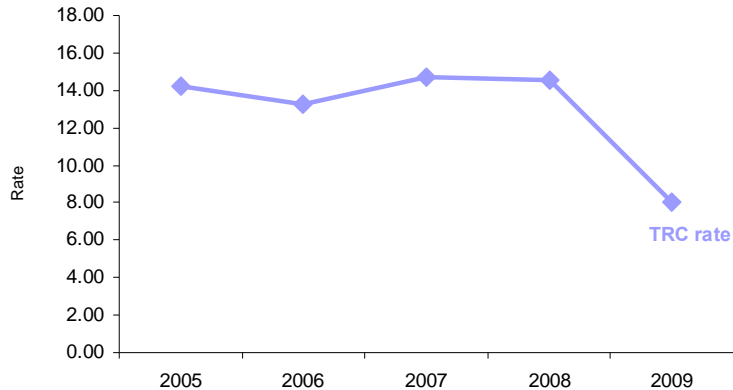
The data presented is compiled from incident reports submitted to NOPSA by Operators of offshore facilities within Australian state and/or Commonwealth waters.

The data is accurate at the time of publication, however slight adjustments can occur due to late submission of data and/or clarifications.



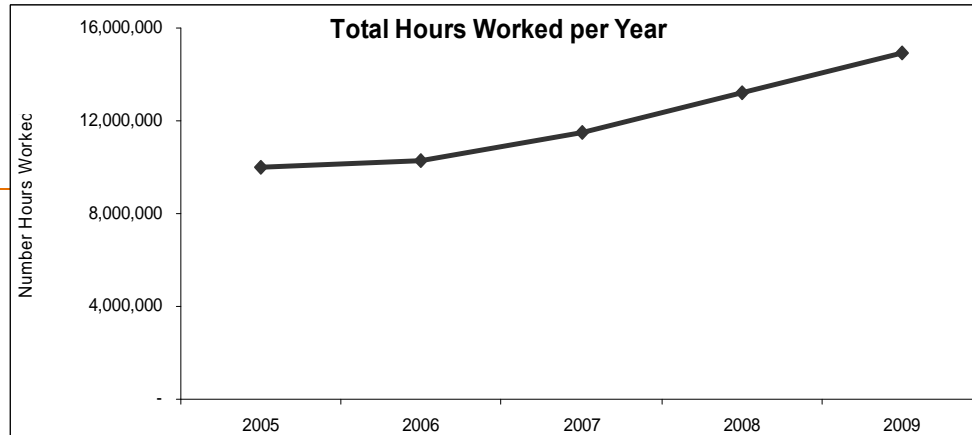
Injury Rates

Rate of Total Recordable Injuries per Year



The annual Total TRC Rate has decreased markedly in 2009, (primarily due to the MTI and ADI rates decreasing by > 50%.)

Total Hours Worked per Year



The hours worked offshore fluctuate monthly but the overall trend shows a steady increase each year.

Rate of Lost Time Injuries ≥1 day per Year



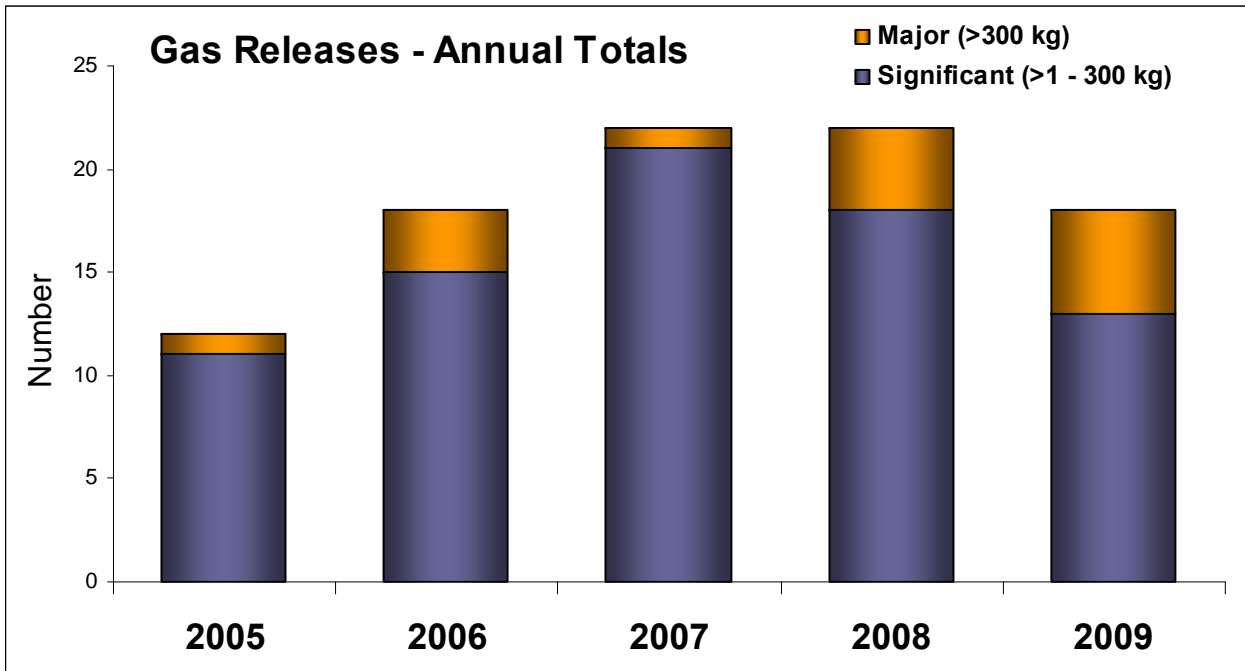
The annual Total LTI Rate ≥3 days has remained relatively stable except for a peak in 2006.

KEY

LTI = Lost Time Injury
TRC = Total Recordable Cases

Data derived from monthly operator incident summaries.

Gas Releases



Data derived from incident notifications submitted to NOPSA. Minor gas releases of 1 kg or less are not included

The total number of gas releases for 2009 has decreased over the last year. There were five major gas releases in 2009.

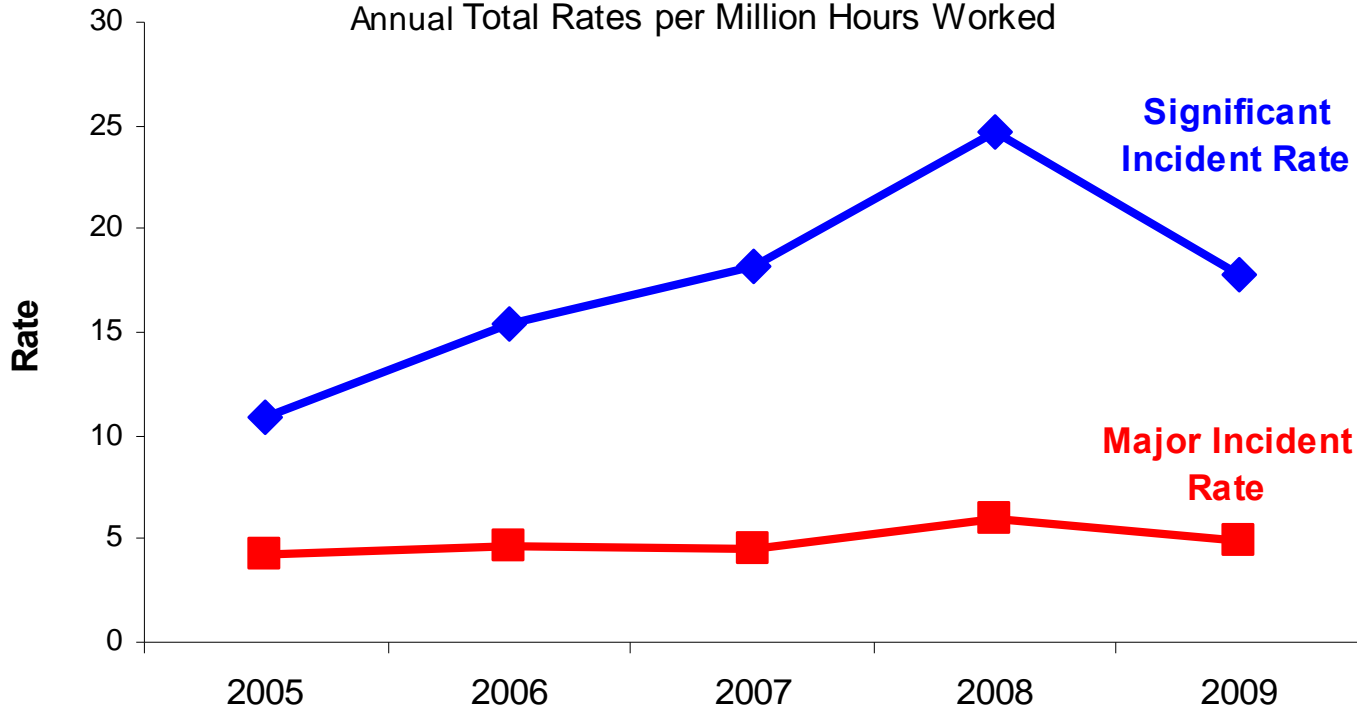
Common root causes of hydrocarbon releases continue to be reported as:

- equipment/parts defects - maintenance
- equipment parts/defects - design
- human performance difficulties - procedures

Incidents

Major and Significant Incident Rates

Annual Total Rates per Million Hours Worked



SIGNIFICANT incidents include:

- Incapacitation LTI ≥ 3 days
- Could cause an LTI ≥ 3 days
- Other needing immediate investigation
- Damage to safety/critical Equipment
- HC gas release $>1-300$ kg
- PL release $>80-12\ 500$ L
- Well kick >50 barrels
- Unplanned Event - Implement ERP

MAJOR incidents include:

- Death/serious injury
- Could cause death/serious injury
- Fires or explosions
- Collision marine vessel & facility
- Hydrocarbon gas release >300 kg
- Petroleum liquid release $>12\ 500$ L

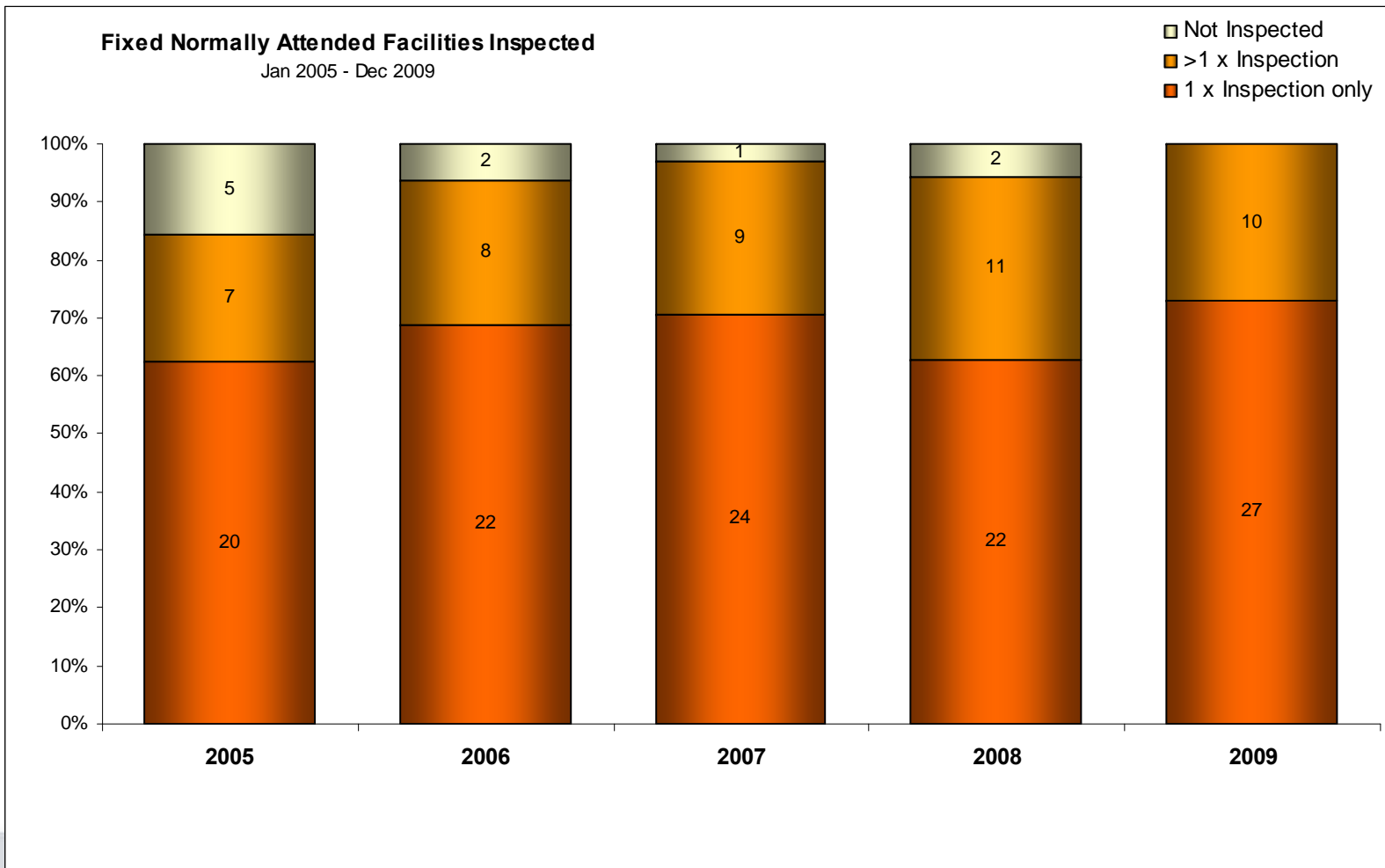
The rate of major incidents is relatively stable.

There was an average of 22 incidents per month reported for 2009.

The significant incident rate has decreased since 2008.

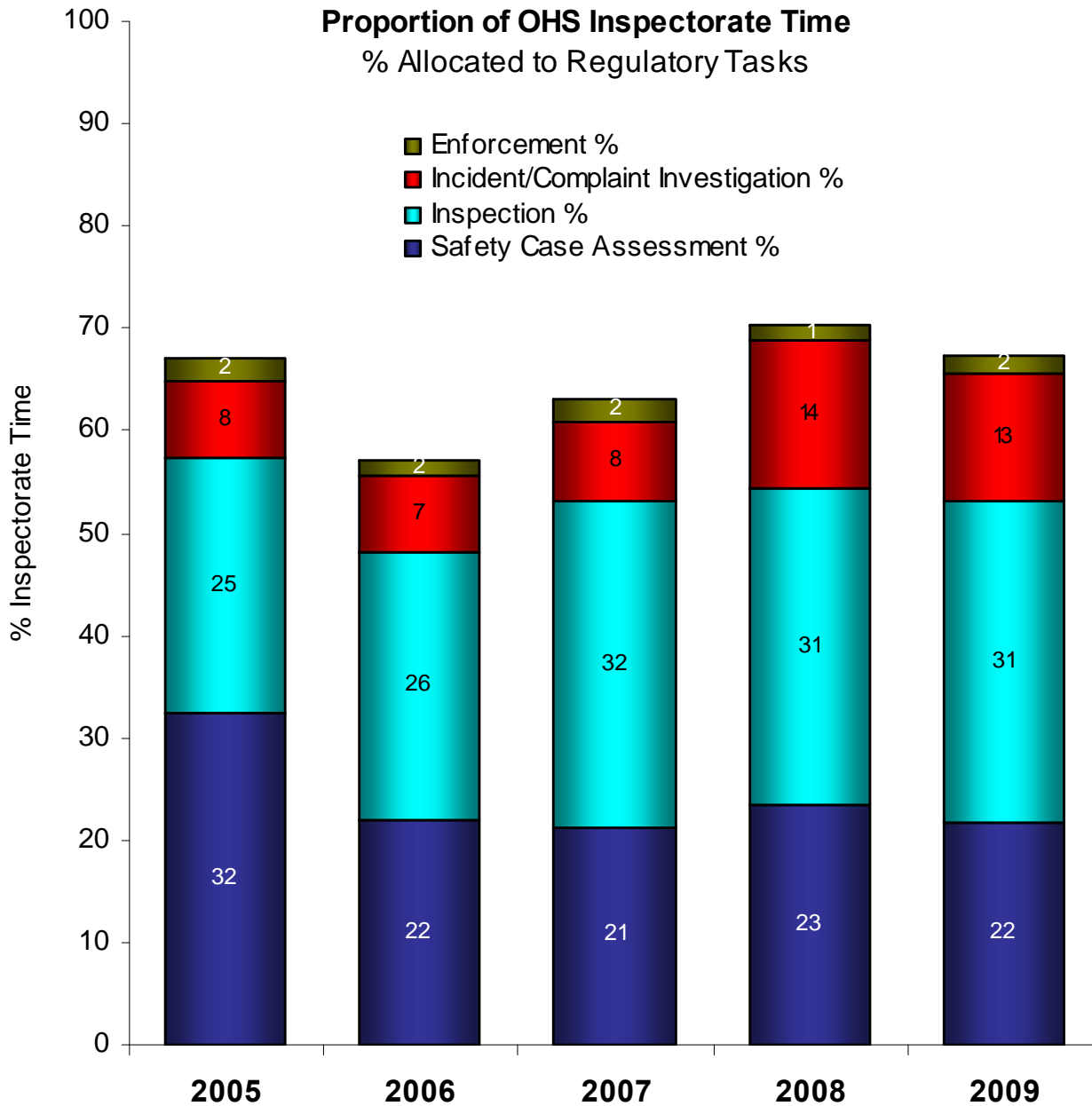
There are currently 37 fixed normally attended facilities in NOPSA jurisdiction.
NOPSA inspected 100% of fixed facilities in 2009.

Inspections



Inspectorate Time

Proportion of OHS Inspectorate Time
% Allocated to Regulatory Tasks



For the last quarter (Oct-Dec 2009)

29% of Inspectorate time was spent on Inspections.

22% of time was spent on Safety Case Assessments.

12% of Inspectorate time was spent on Incident/Complaint Investigation.